

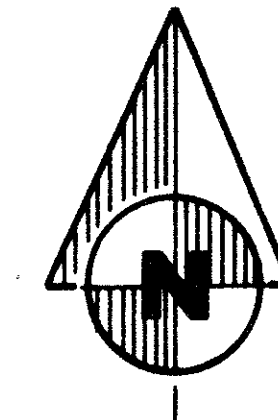
42/174

THE SHORES AT WELLINGTON - P.U.D.

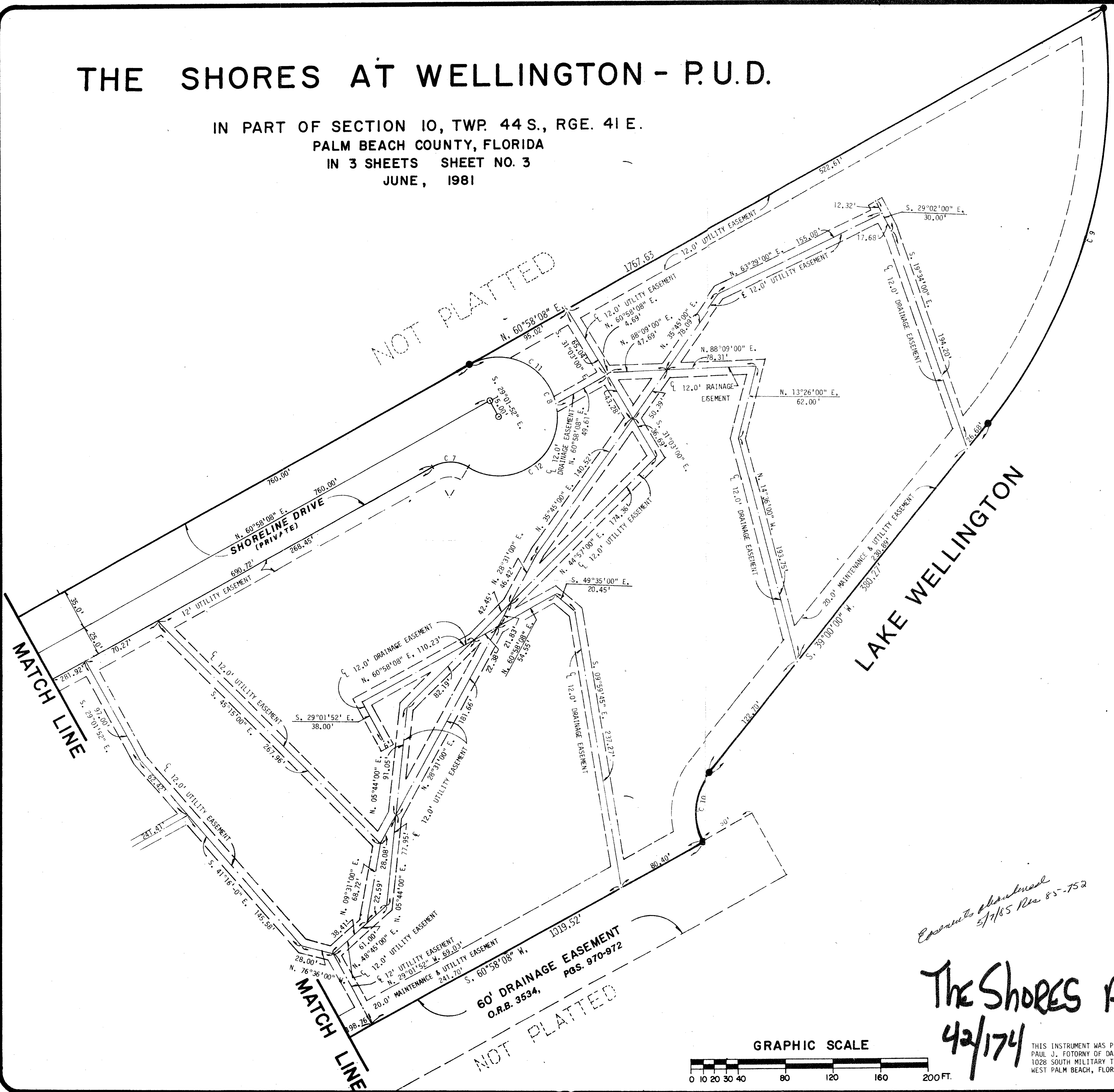
IN PART OF SECTION 10, TWP. 44 S., RGE. 41 E.
PALM BEACH COUNTY, FLORIDA
IN 3 SHEETS SHEET NO. 3
JUNE, 1981

174

42



NOT PLATTED



SURVEYOR'S NOTES

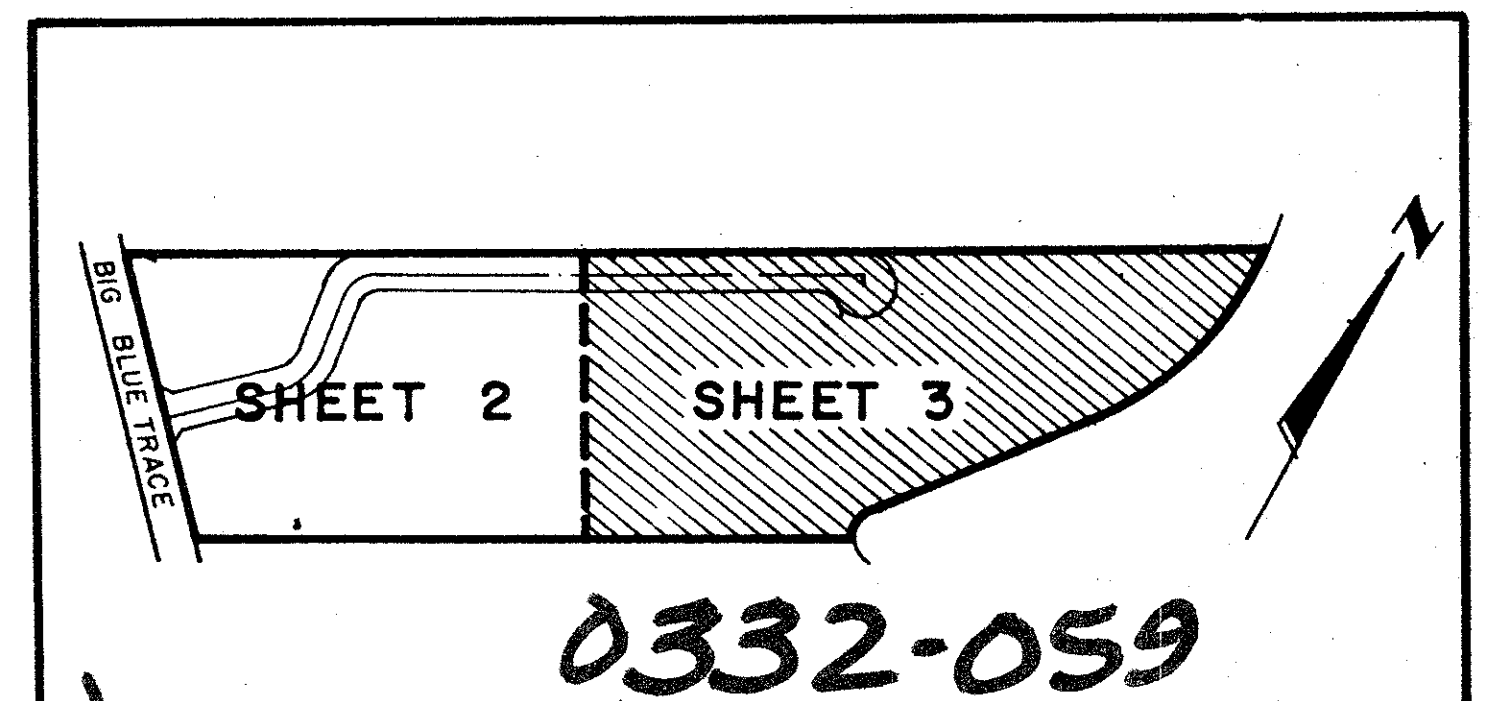
1. \odot DENOTES PERMANENT CONTROL POINTS
2. \bullet DENOTES PERMANENT REFERENCE MONUMENTS
3. BEARINGS ARE REFERENCED TO AN ASSUMED BEARING OF N. 42°44'45" W, ALONG THE CENTERLINE OF BIG BLUE TRACE.
4. BUILDING SETBACK LINES SHALL BE AS REQUIRED BY PALM BEACH COUNTY ZONING REGULATIONS
5. THERE SHALL BE NO BUILDINGS OR ANY KIND OF CONSTRUCTION OR TREES OR SHRUBS PLACED ON DRAINAGE EASEMENTS OR UTILITY EASEMENTS

CURVE TABLE - "C" NO.'S

NO.	RADIUS	DELTA ANGLE	ARC DISTANCE
7	30.0'	60°-00'-00"	31.42'
8	50.0'	240°-00'-00"	209.44'
9	455.0'	47°-07'-18"	374.20'
10	50.0'	68°-01'-52"	59.37'
11	50.0'	107°-27'-27"	93.77'
12	50.0'	132°-32'-33"	115.67'

MATCH LINE

MATCH LINE



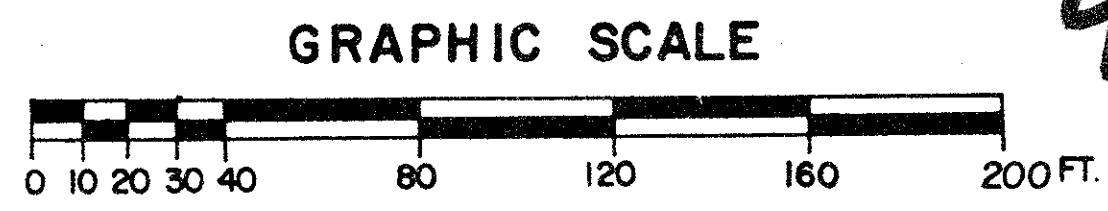
0332-059

PLAT SHEET INDEX MAP

SCALE 1" = 300'

Examine original 5/7/85 Res 85-752

The Shores At Well.
42/174



THIS INSTRUMENT WAS PREPARED BY:
PAUL J. FOTORNY OF DAILEY-FOTORNY, INC.
1028 SOUTH MILITARY TRAIL
WEST PALM BEACH, FLORIDA

Dailey-Fotorny, inc.
land surveyors, planners, engineers